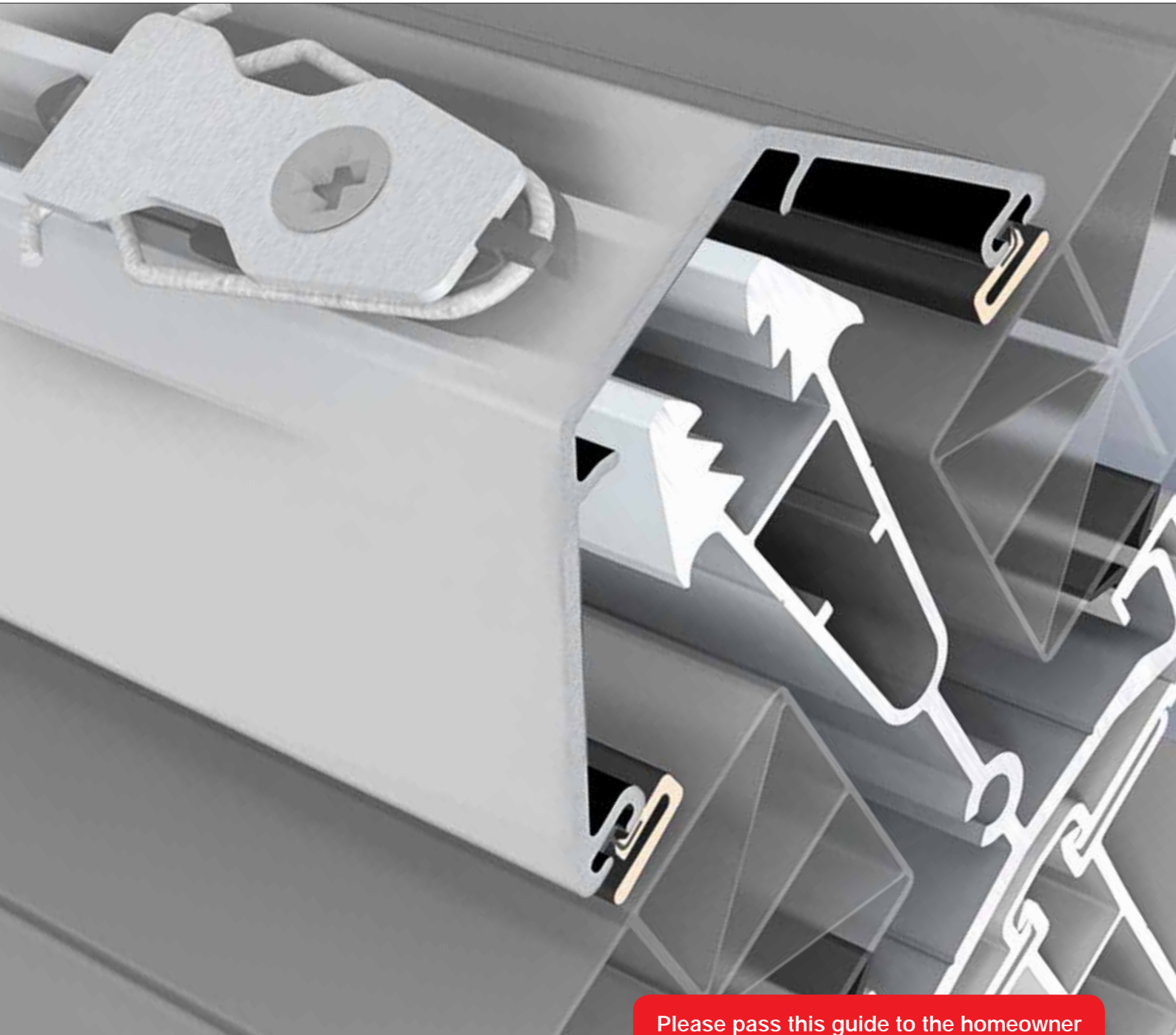


ultraframe



Please pass this guide to the homeowner once installation is complete.

Window & Door Products

Orangery Products

Home Extension Products

Conservatory Products

Skylight Products

# *Classic* Aluminium Roof

Installation Guide

Version 3.0 | Sept 2011

# Welcome

## CONTENTS

---

<b>Product identification</b>	<i>page 3</i>
<b>Handling aluminium products</b>	<i>page 4</i>
<b>Installation of standard aluminium</b>	<i>pages 5-7</i>
<b>Jack rafters</b>	<i>page 8</i>
<b>Lean to cloaking trim</b>	<i>page 8</i>
<b>Removing the bar top cap</b>	<i>page 8</i>
<b>Valley jack rafters</b>	<i>page 8</i>
<b>Aluminium muntin bar</b>	<i>page 9</i>
<b>Aluminium glazing end closure</b>	<i>page 9</i>
<b>Appendix</b>	<i>page 10</i>
<b>Cleaning and maintaining powder coated aluminium products</b> Guidance for homeowners and fitters	<i>page 11</i>

*Please read in conjunction with the main installation guide supplied in the roof*



## PRODUCT IDENTIFICATION

<p>Glazing bar clip (Std) <b>ABC001</b></p> 	<p>Glazing bar clip (Valley) <b>ABC002</b></p> 	<p>Aluminium Transom Top Cap <b>ATC---/25</b></p> 	<p>Aluminium Transom Top Cap <b>AOC---/25</b></p> 	<p>Aluminium Georgian Top Cap <b>AGC---/25</b></p> 		
<p>Aluminium Starter Top Cap <b>ASC---/25</b></p> 	<p>End profile <b>AGP/25</b> <b>AGP/25GR</b></p> 	<p>Aluminium Full Ridge Radius End Cover <b>ACP001</b></p> 	<p>Aluminium Half Ridge Radius End Cover Left <b>AHC001L</b></p> 	<p>Aluminium Half Ridge Radius End Cover Right <b>AHC001R</b></p> 		
<p>Aluminium Ball Finial <b>ACF001</b></p> 	<p>Fixing - Finial adaptor M8x50 HD screw <b>ACC002</b></p> 	<p>Radius end clamp washer <b>ACP003</b></p> 	<p>Standard twin bolt and nuts <b>SHBC001T</b></p> 	<p>Radius end flashing trim <b>ACP004</b></p> 	<p>Muntin <b>AMB/25</b> <b>AMB/25GR</b></p> 	<p>Brush - half ridge radius end cover <b>AHC002</b></p> 
<p>Brush - full ridge radius end cover <b>ACP002</b></p> 	<p>Aluminium Ridge Top Cap <b>ACP---/1</b></p> 	<p>Gasket <b>AGS305</b></p> 	<p>Aluminium Half Ridge Top Cap <b>AHC---/1</b></p> 	<p>Lean-to Cloaking Trim <b>ALC---/1</b></p> 	<p>Aluminium low profile cresting <b>ALP---/1</b></p> 	<p>Aluminium Finial <b>ACC001</b></p> 

**Recommended tools** - Glazing hammer/Mallet, 6mm drill bit

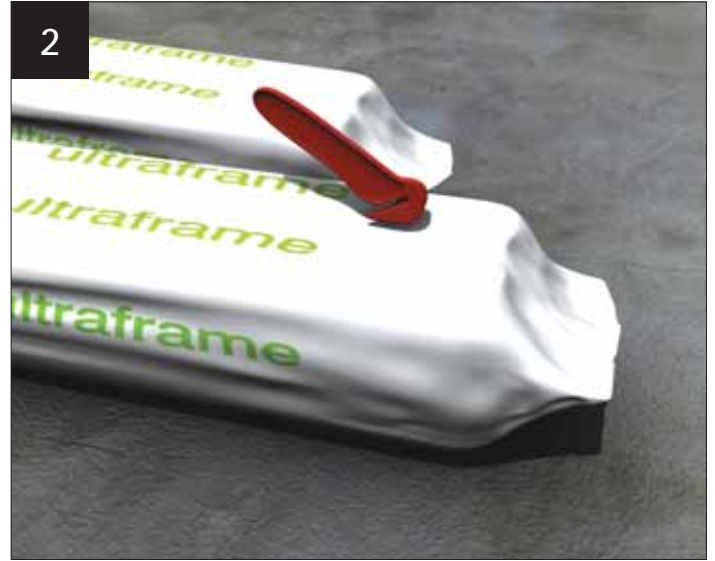
**Additional materials** - Small timber block

**Protective film** - Peel back and remove after installation. Safely dispose of the redundant film.

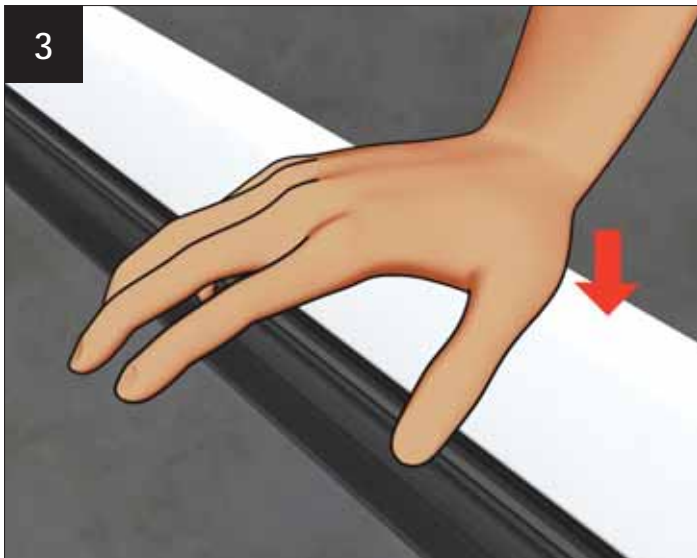
## HANDLING ALUMINIUM PRODUCTS



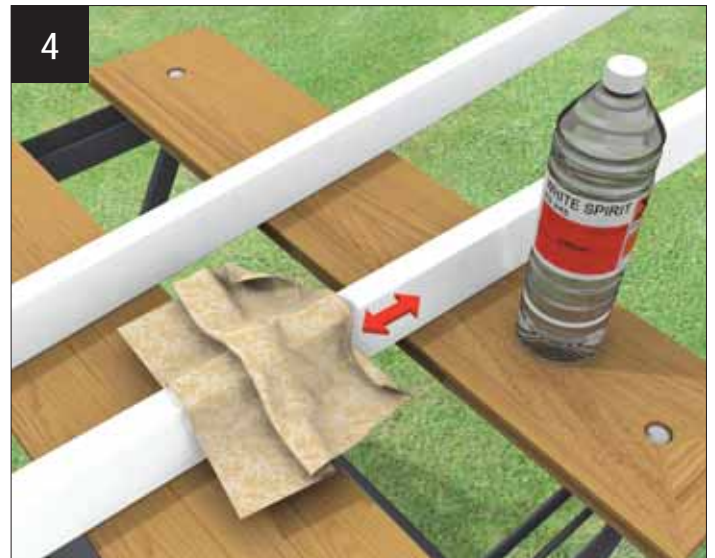
If storing in warehouse racking or on frails/roof racks, take care to support the products and do not over tension straps and ropes.



When opening sealed packs, use a special box knife opener.



Take care when fitting aluminium products to not use excessive force.



Grease marks, dirt and mastic spillage may be removed using white spirit.



If site cutting is necessary (drainage slots need inserting or a down pipe hole has to be cut) ensure all swarf is kept away from the painted surface and then; seal with a primer/corrosion inhibitor and then top coat. Alternatively, use a suitable gap sealant to prevent the onset of corrosion. These steps are critical in marine environments.

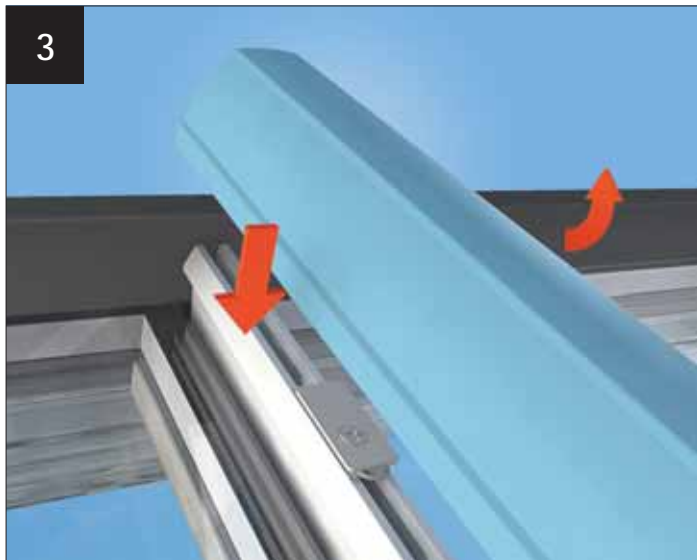
# INSTALLATION



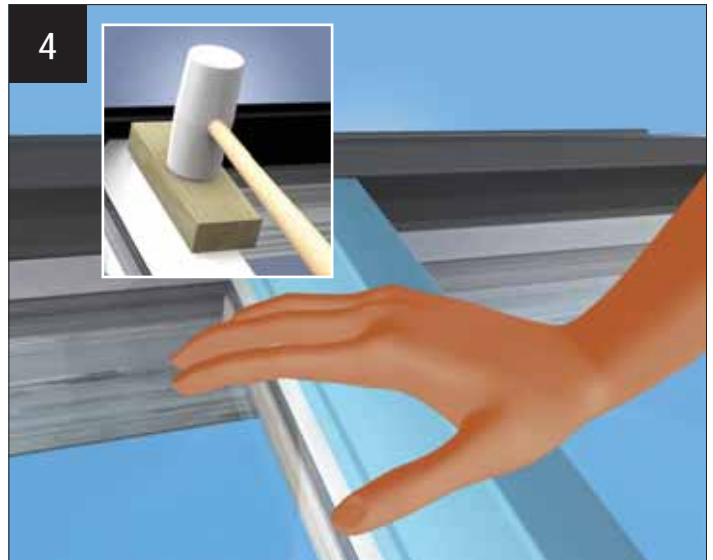
Ensure the eaves beam, glazing bars, ridge/wallplate are already installed. Ensure the top cap clip spring is in the loaded and primed position (as shown).



Ensure the clip is orientated as shown, with 'trigger' towards the ridge.



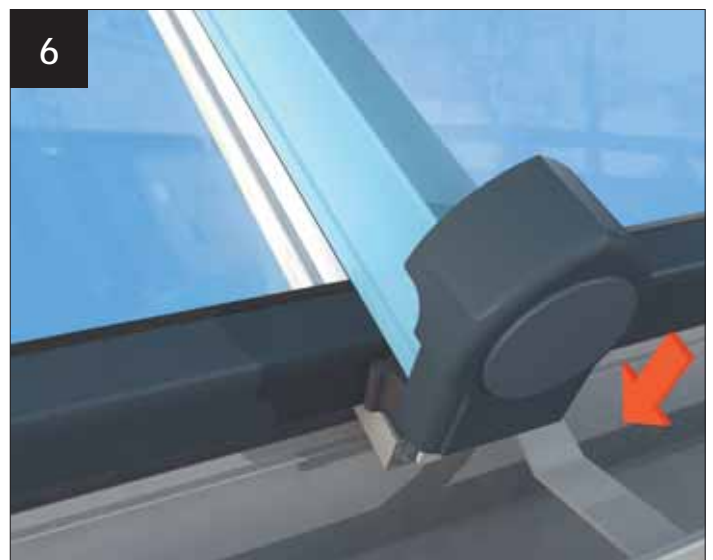
Ensure the rain baffle upper wing is lifted prior to fitting the top cappings.



Knock the glazing bar top cappings on with a glazing hammer/mallet and timber block. Each capping is numbered according to its position in the roof.

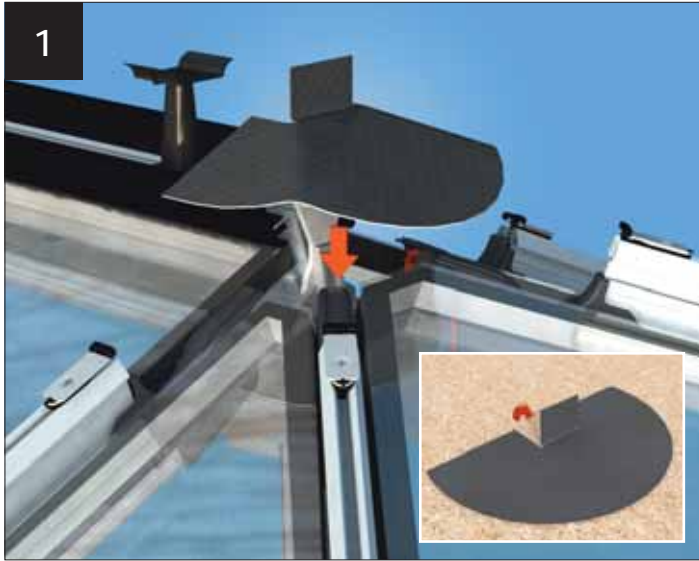


Drill a 6mm hole, then use the fixing provided (CRN010) to attach the top cap to the glazing bar. (Not required if using Cornice with wire ties)

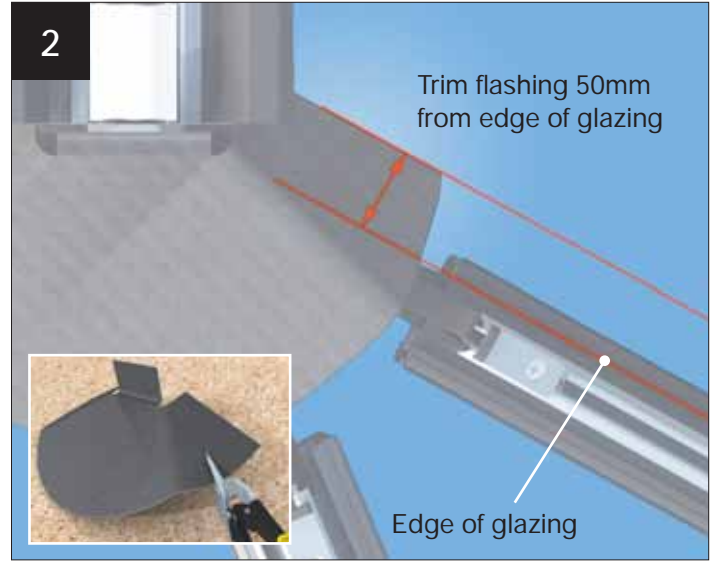


Fit the glazing bar end caps by sliding onto the plastic fixing blocks. Push fit the insert into the end cap.

# INSTALLATION



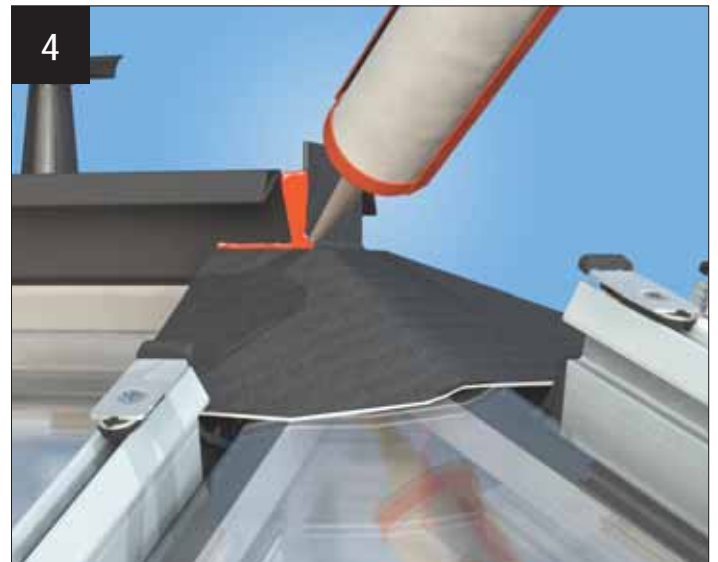
Remove protective film then fold up tab on flashing trim. Place flashing on roof and form to shape. Mark trim lines (dependent on roof style)



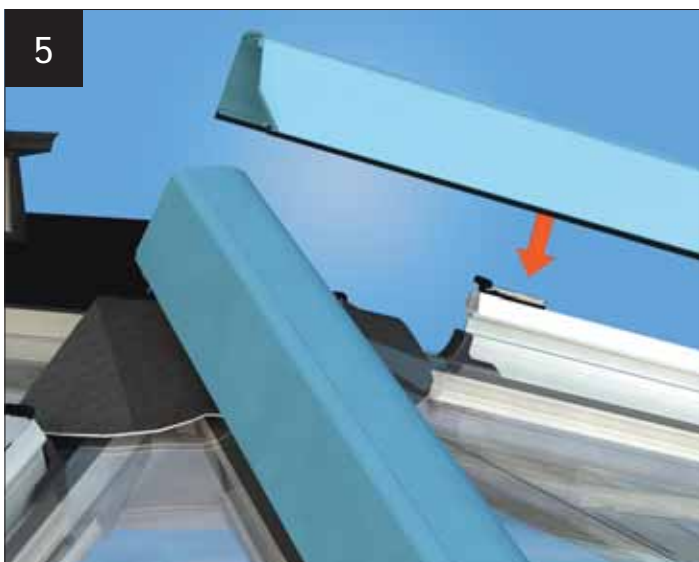
Trim Flashing



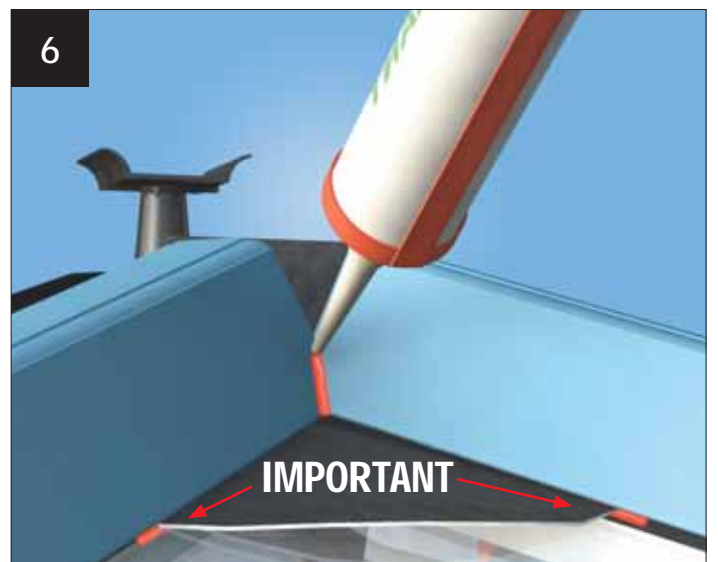
Apply Gutterbond supplied to underside of flashing.



Fit flashing trim pushing firmly into place, ensuring intimate contact with glazing. Seal all interfaces between flashing and rain baffles.



Install bar caps, securing flashing into place. Point around bar caps.

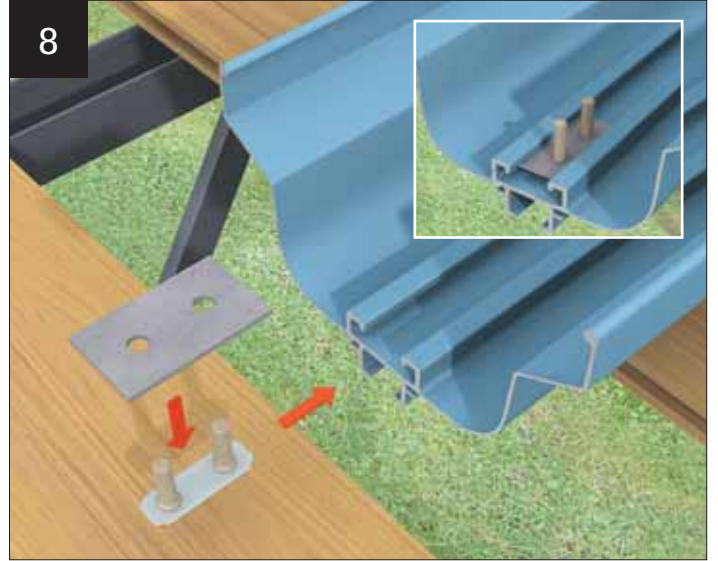


Discretely 'point' the junctions between the capping gaskets and radius end flashing as shown (use new uncut nozzle).

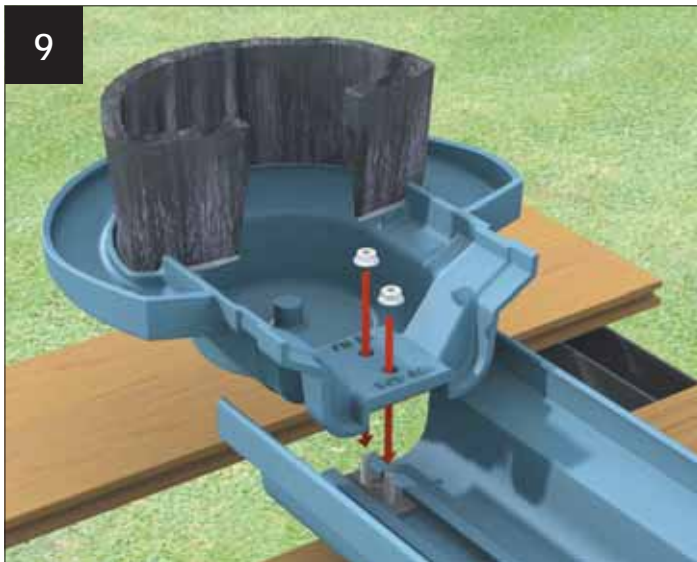
# INSTALLATION



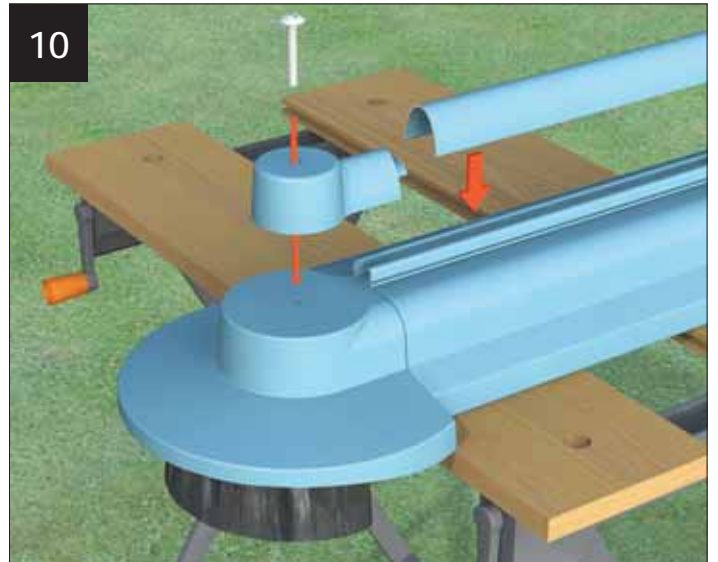
Fit radius brush.



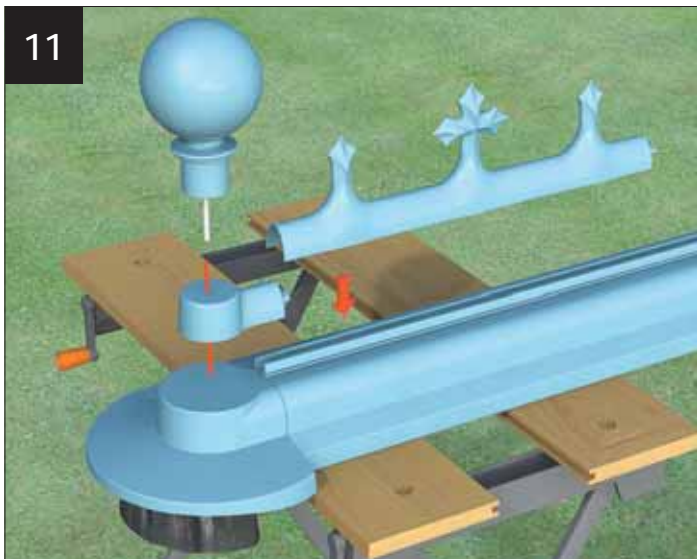
Assemble twin bolt and radius end clamp washer. Slide into ridge top cap.



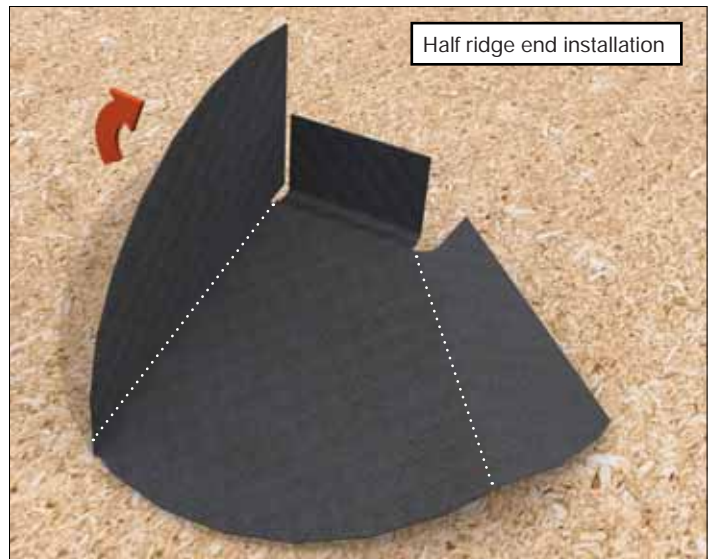
Assemble and secure radius end to ridge top cap with spigot nuts supplied.



Low profile cresting. Assemble as shown.



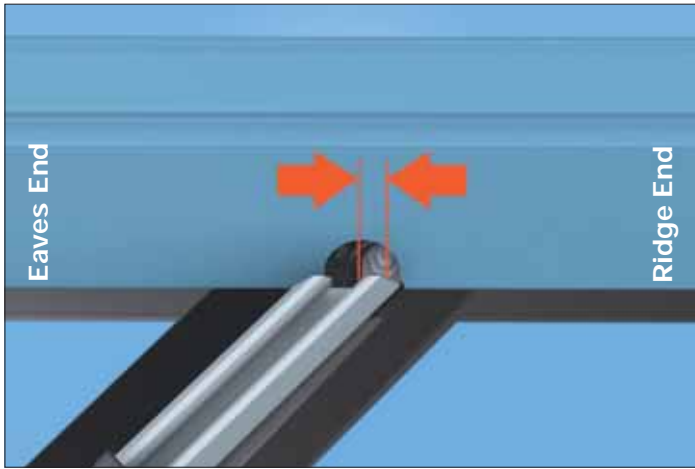
Ball finial cresting. Assemble as shown.



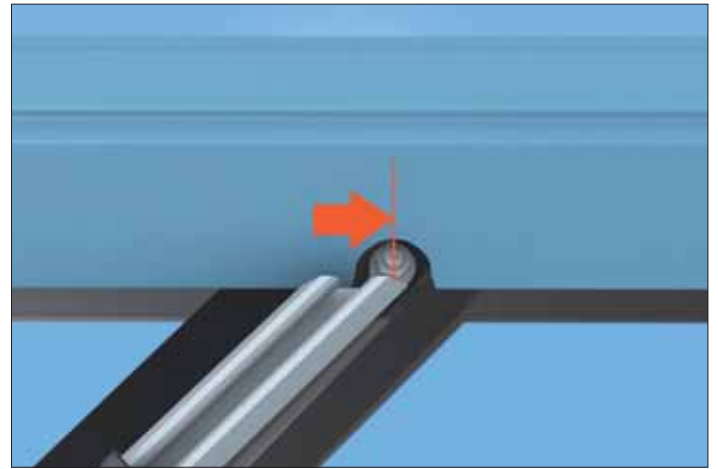
The half ridge end flashing detail should be folded as shown and fitted in a similar manner to that of the full ridge end.

# INSTALLATION

## Jack Rafter Situation

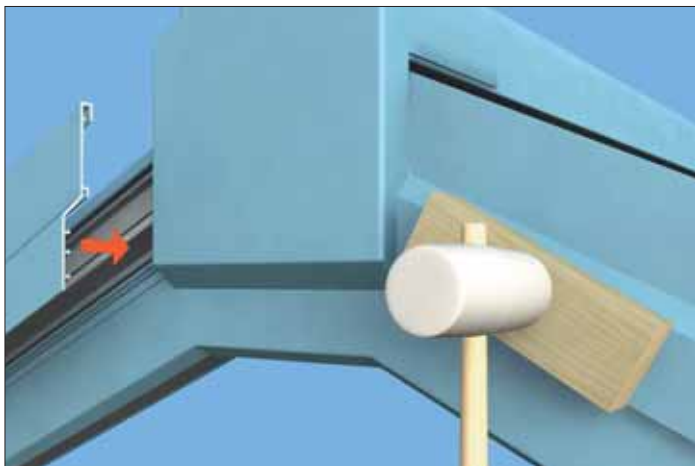


Position the glazing bar top cap so the cut out sits in the below the jack rafter fixing.



Tap the glazing bar top cap up until the cut out sits central to the jack rafter fixing

## Lean To Cloaking Trim Installation



Knock the lean to cloaking trim on with a deadblow hammer and timber block. It may require trimming at the eaves end - take care when trimming powder coated aluminium.

## Removing The Glazing Bar Top Caps

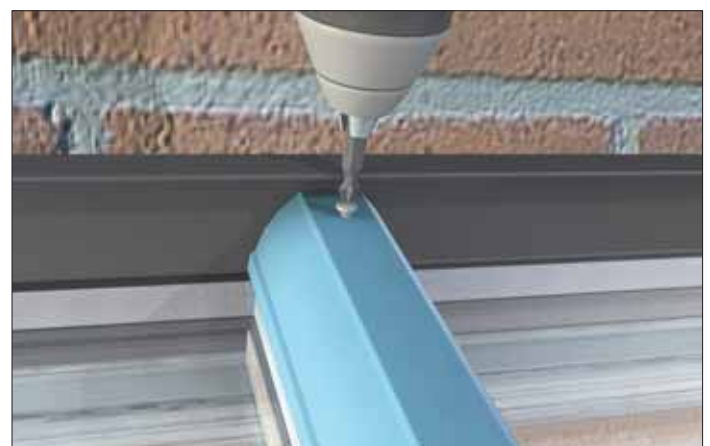


Slide the end cap up and off the fixing block and unscrew the fixing at the end of the glazing bar (reverse steps 05 and 06). Slide the glazing bar top cap down to release it from the spring loaded clip. To re-install repeat steps 1-6.

## Valley Jack Rafter Fixing



Ensure the clip is orientated as shown, with 'trigger' towards the ridge.



Drill a 6mm hole at the ridge end under the rain baffle wing . Use the fixing provided (CRN010) to attach the top cap to the glazing bar.

## INSTALLATION

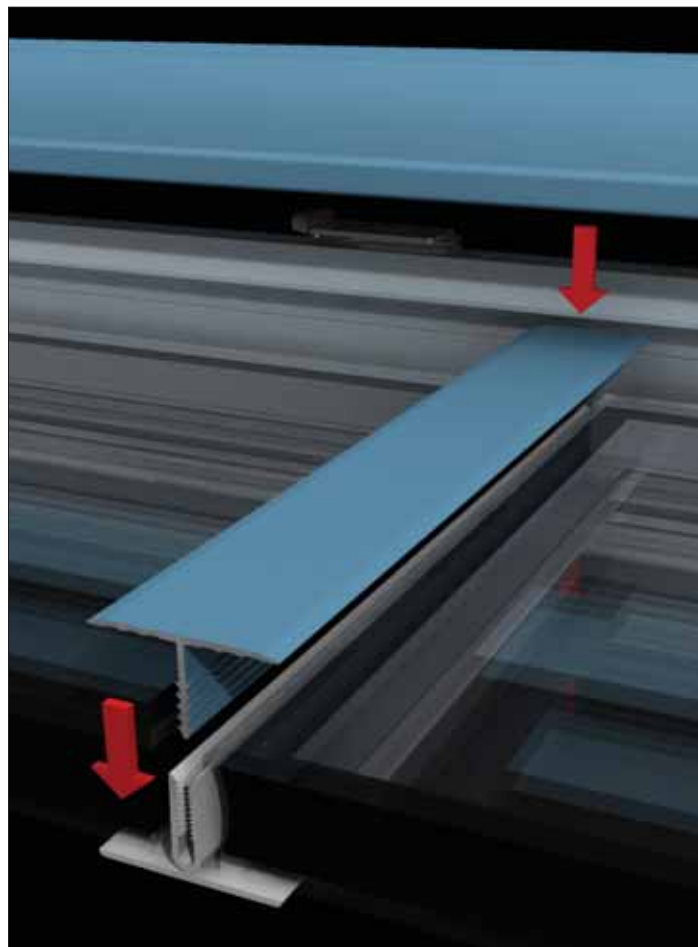
### Aluminium Muntin Bar

---



Take the muntin bar profile (top and bottom section) that matches its corresponding sealed unit. Take the lower PVC section and allow it to span between the two adjacent glazing bars. Lower into position the up slope sealed unit. NOTE: MUNTIN SHOULD BE SAME WIDTH AS UNIT.

Now take the upper aluminium section and lay it face down onto a smooth clean surface to protect its painted finish. Using the relevant sealant (MS Polymer sealant such as Rotabond 2000 must be used on self cleaning glass), apply a generous bead to each side.



Now lift the sealed unit that goes on the lower slope into position, turn the upper profile over, place it into position and tap down the profile using a non marking plastic mallet. Wipe clean any sealant from the unit face. NOTE: WE RECOMMEND A SECOND PERSON TO SUPPORT THE MUNTIN FROM THE UNDERSIDE WHEN TAPPING DOWN.

Now, tap the glazing top cap into position, which will 'trap' the muntin profiles.

### Aluminium Glazing End Closure

---



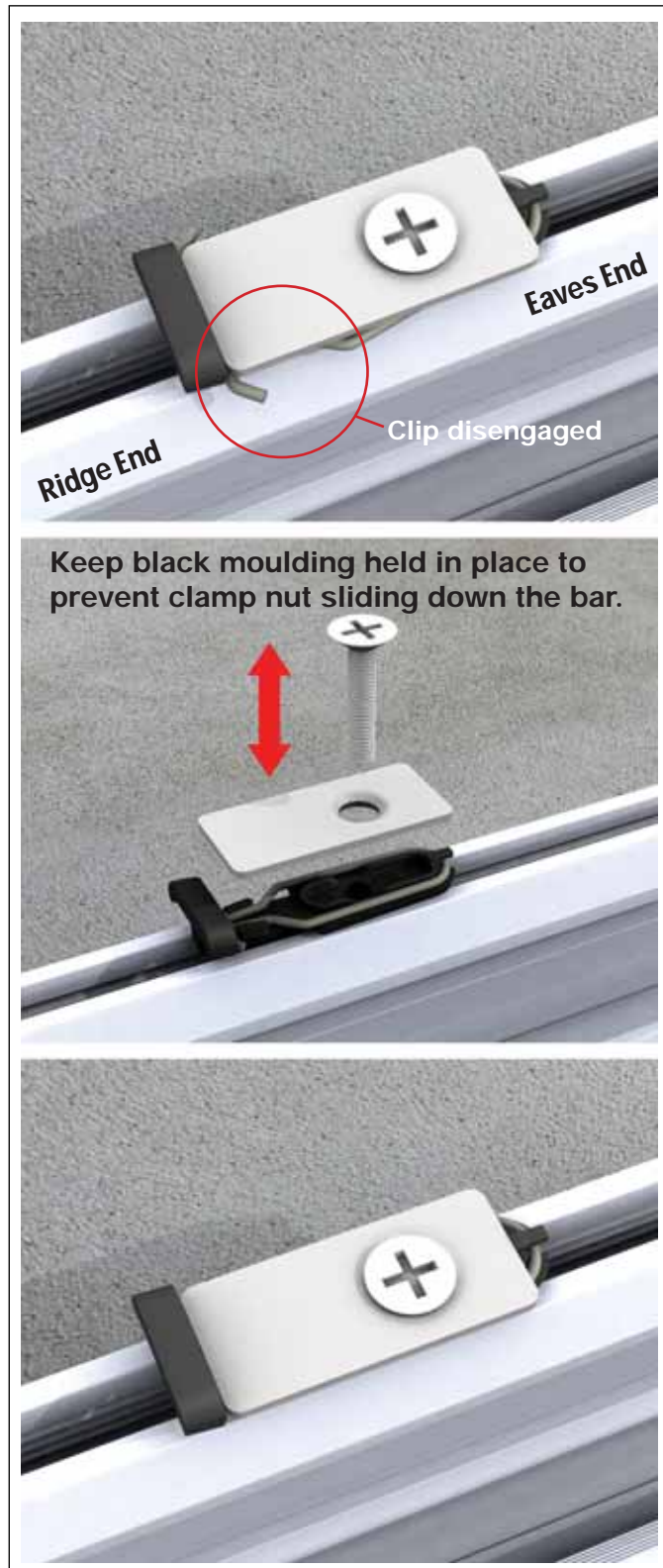
Take the painted profile and protect its surface. Apply a bead of relevant sealant (MS polymer on self cleaning glass). Slide into position on sealed unit, wipe clean any sealant from surface of glass.

## APPENDIX

Before commencing installation of the aluminium cappings, ensure that the spring clip retention device is loaded and primed. Please see the images below which relate to the different bar situations.

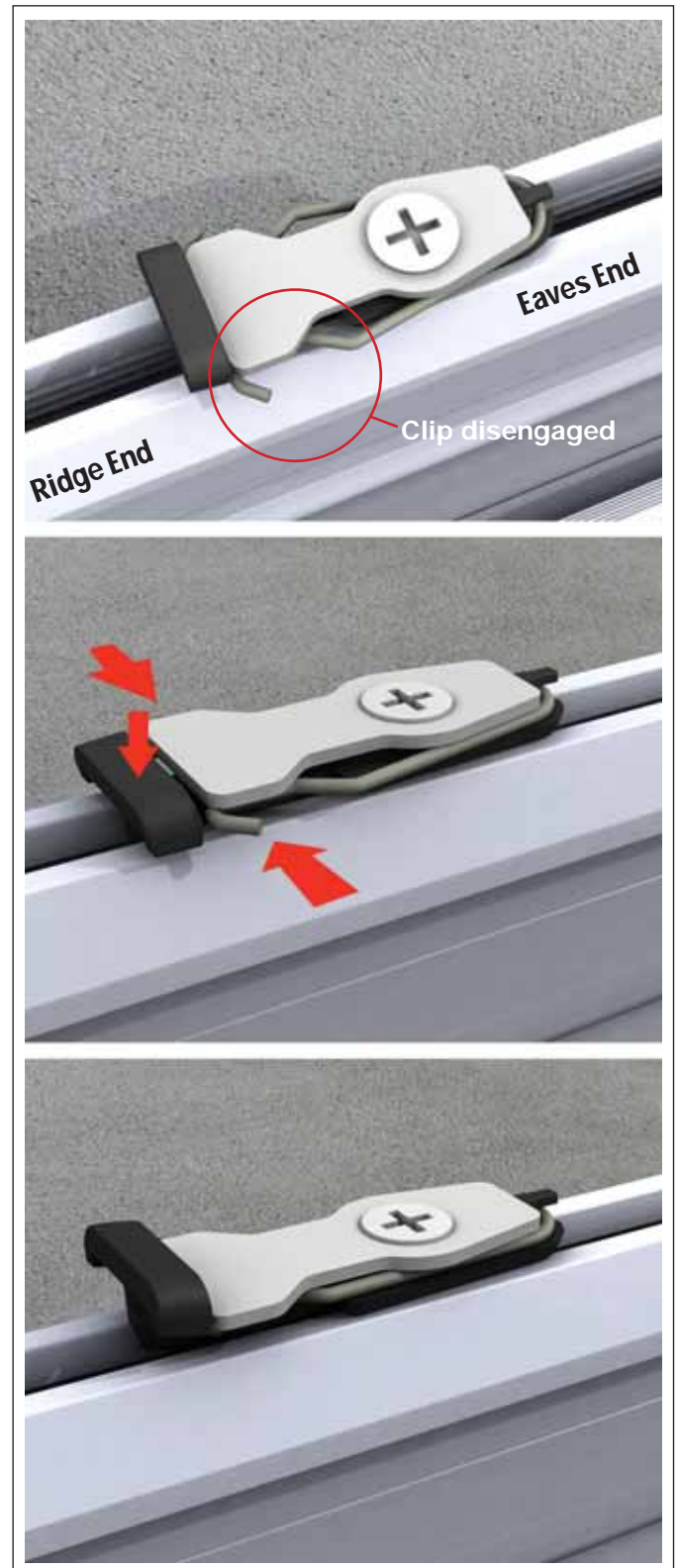
### ABC001 - Clip reload sequence

*Transoms, jack rafters, starters bar and hip bars without jack rafters (factory pre-installed at 500mm ctrs)*



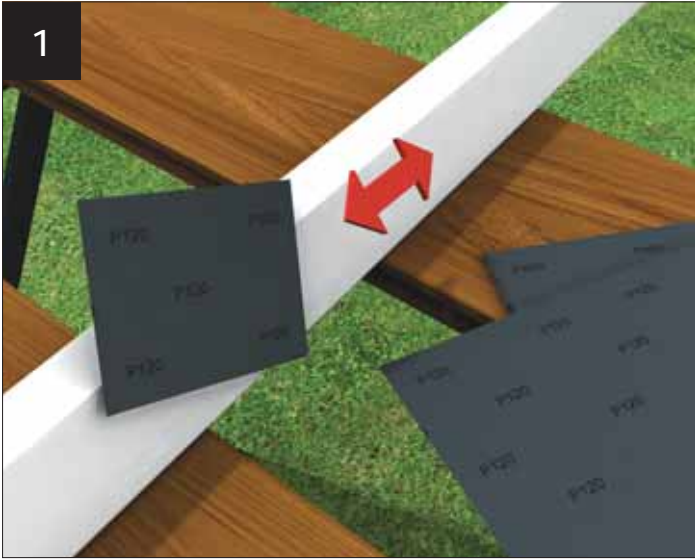
### ABC002 - Clip reload sequence

*Valley rafters and hip bars with jack rafters (factory pre-installed at 250mm ctrs)*



## CLEANING AND MAINTENANCE

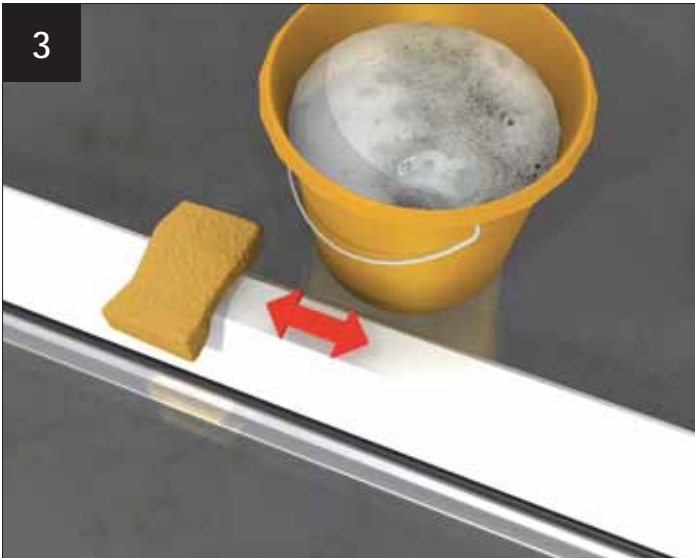
It should be noted that polyester powder coatings are not maintenance free – the extent of cleaning depends upon the local environment and on the attitude of the building owner. Think cars here...if the building owner wants a finish like that, more regular cleaning is needed. All paints will 'chalk' to some extent and there will be a reduction in gloss level over time – this can be restored.



1 If surface damage is encountered, use 120-360 grit paper to prepare the surface. Wipe clean with white spirit.



2 Ensure the surface is dry – apply a thin primer coat using a fine brush.



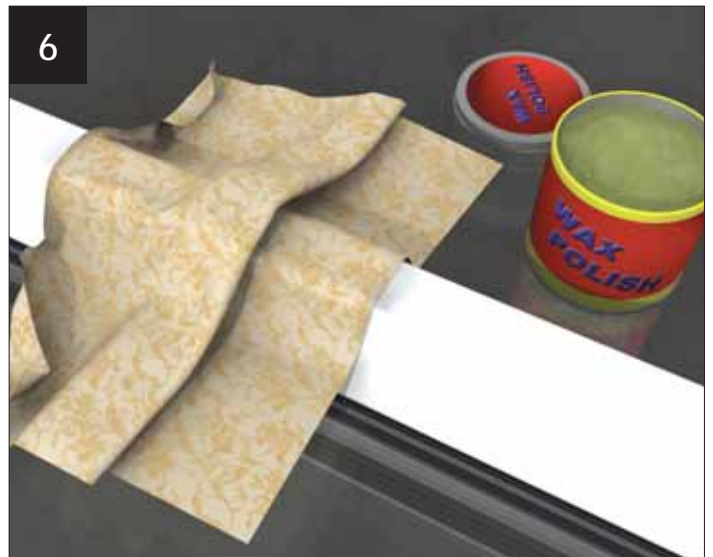
3 General cleaning can be undertaken by a wash with warm soapy water.



4 Finally, apply an air drying top coat with a fine brush.



5 Stubborn marks can be removed using a renovating cream like CIF or perhaps T-cut. Once dry, buffing can take place.



6 For added protection, a wax polish can be applied up to twice per year – follow the polish manufacturer's instructions carefully.

# ultraframe

Transforming light and space

[www.ultraframe.co.uk](http://www.ultraframe.co.uk)

Ultraframe (UK) Ltd, Salthill Road, Clitheroe, Lancashire. BB7 1PE